

Index

Introduction

Map of Housing Locations

Independent Living

Rentals

[Evergreen Apartments](#)

[Leona Apartments](#)

[Park Towers](#)

Senior Cooperatives

[Village Cooperative of Hutchinson](#)

For Sale 55+ Age Restricted Housing

[Greencastle](#)

[Community of Lake Ridge](#)

Senior Housing with Services

[Prince of Peace](#)

Long-term Care or Skilled Nursing Facilities

[Ecumen Oaks & Pines](#)

[Harmony River](#)

[Prairie Senior Cottages](#)

[Woodstone Senior Living Community](#)

[Birchwood House](#)

Community Senior Friendly Amenities

[Adult Day Care Services](#)

[Employment](#)

[Financial Services](#)

[Health Insurance Help Service](#)

[Home Health Care](#)

[Hospice](#)

[Information & Referral](#)

[Medical](#)

[Recreation](#)

[Transportation](#)

[Veteran's Services](#)

Introduction



Mission Statement: The City of Hutchinson exists so that residents, businesses, property owners, and visitors are provided with quality services and programs that support a safe, healthy, sustainable and business-friendly community with a small town atmosphere for a cost of government that is similar to, or less than, comparable out-state Minnesota cities.

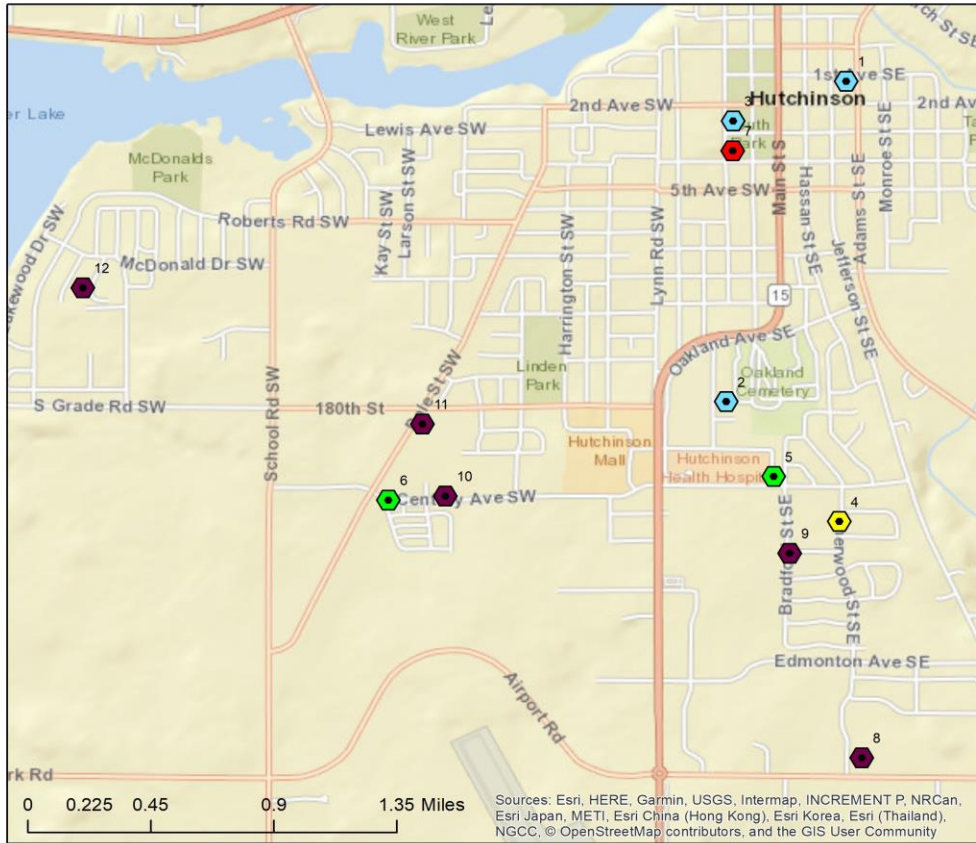
Our community has a growing and aging population and we are dedicated to providing a variety of housing options with vast amounts of services for individual needs. This brochure consists of information regarding 12 senior housing options ranging from independent living, senior housing with services, and Long-term Care or Skilled Nursing Facilities.

Information provided was obtained in November 2018 and is subject to change.

Hutchinson City Center
111 Hassan St SE
Hutchinson, MN 55350

<https://www.ci.hutchinson.mn.us/>

Senior Housing Projects



Legend

Senior_Housing Type

- For Sale 55+ Age Restricted
- Independent Living
- Long-Term Care/Skilled Nursing Facilities
- Senior Cooperatives
- Senior Housing with Services

INDEPENDENT LIVING

1. Evergreen
2. Leona
3. Park Towers

SENIOR COOPERATIVES

4. Village Cooperative

FOR SALE 55+ AGE RESTRICTED

5. Greencastle Condominiums
6. Community of Lakeridge

SENIOR HOUSING WITH SERVICES

7. Prince of Peace

LONG TERM MEMORY CARE/ SKILLED NURSING FACILITIES

8. Harmony River
9. Praire Senior Cottages
10. Ecumen Oaks and Pines
11. Woodstone Senior Living Community
12. Birchwood House



0 0.225 0.45 0.9 1.35 Miles

Sources: Esri, HERE, Garmin, USGS, Intermap, INCREMENT P, NRCan, Esri Japan, METI, Esri China (Hong Kong), Esri Korea, Esri (Thailand), NGCC, © OpenStreetMap contributors, and the GIS User Community

URSI STUDIO 2018

Independent Living (Rental)

Evergreen Apartments
115 Jefferson St. SE
(320) 587-9432
evergreen@bdcmgmt.com



Please contact the establishment for information on demographics, amenities, services and features.

Leona Apartments
225 Echo Circle
(320) 587-2483
karch@hutchtel.net
<https://www.monroegroup.com/property/leona-apartments/>



Please contact the establishment for information on demographics, amenities, services and features.

Independent Living (Rental)

Park Towers Apartments
133 Third Avenue SE
(320) 587-2168
www.hutchinsonhra.com



Park Towers Apartments offers quality, affordable housing within an attractive community setting.

Demographics

- Preference for Elderly

Amenities

- Community Room and Kitchen
- Spacious areas throughout to socialize
- Front and Back Patio
- Raised garden
- Unit air conditioners provided
- Window treatments provided
- Onsite laundry with front load washers and dryers
- Onsite beauty shop
- Secure entry system with intercom
- Free Wi-Fi Parkside Room
- On-site parking

Services

- Senior Dining
- On-Site Management
- Guardian Alert 911 twenty four hour emergency response system

Features

- Two Elevators
- Handicapped accessible entrance
- Six handicapped accessible units
- Smoke free living
- Monthly social calendar

Independent Living (Senior Cooperative)

Village Cooperative of Hutchinson

1300 Sherwood Street SE

(320) 243-7761

<https://ittakesavillagecoop.weebly.com>



Our Cooperative is an excellent place to live, where a sense of community is formed, and where members are more than neighbors...they are family.

Demographics

- 55+

Amenities

- 1 & 2 Bedrooms Units with 1 & 2 Baths available
- Phone & Cable outlets in each apartment
- Paid Heat
- Paid Sewer & Water
- Paid Trash & Garbage
- Paid Real Estate Taxes
- No more doing Lawn Care or Snow Removal
- Garages
- Free use of Great Room
- Attractive Guest Room for my visitors
- Monthly Catered Meal
- Garden Plots
- Wi-Fi Access

Features

- Ownership with tax benefits
- No home yard/maintenance
- Spacious one level living
- Repairs are taken care of for you
- Safe & secure community
- An array of common areas
- Complementary 'while you're away services' (just lock your door and leave...no worries)
- Library, Wood Shop, Craft-Game Room

Independent Living (For-Sale 55+ Age Restricted Housing)

Greencastle Retirement Condominium
250 Freemont Ave SE
(320)-234-0929

**Greencastle
Retirement
Condominium**

Please contact the establishment for information on demographics, amenities, services and features.

Community of Lake Ridge
1085 Dale St SW
(320) 234-8360

Community of Lake Ridge

Demographics/Rate

- 55+ age restricted

Amenities

- Shared workshop
- Shared craft room
- Shared game room
- Exercise room
- Library
- Guest room
- Storage
- Kitchen
- Gathering room

Services

- Independent Living
- Snow/Lawn Care
- Outdoor maintenance

Features

- Homeowner Association
- Security System

Senior Housing with Services

Prince of Peace

301 Glen Street SW

(320)-234-7588

Merline@poprl.org

<http://www.poprl.org/>



It is our mission at Prince of Peace Retirement Living to create a dignified lifestyle with a “senior community” that provides conveniences and services which enhance the quality of life and social involvement of each community member.

“Dignity, Independence, Affordable, Comfort, Security”

Demographics

- 55+ age restricted

Amenities

- 3 Different sized apartments
- Neighborhood style living
- Extra storage space
- Major appliances
- Laundry facilities
- Heated garage (\$)
- Utilities
- WiFi

Services

- Scheduled activities 7 days a week
- Transportation services
- Weekly light housekeeping
- Grocery shuttle & store to door
- Secure building
- On-site parking

Features

- Optional noon meal service (\$)
- Laundry and linen service (\$)
- Emergency response (\$)
- Licensed health care provider within building (\$)
- Craft room/shop
- Fitness & Billiards room

Long-term Care or Skilled Nursing Facilities

Ecumen Oaks & Pines

945 & 1015 Century Ave SW

(320) 484-9184

www.ecumenoaksandpines.org



Mission: Creating home with you.

Vision: We envision a world without ageism.

Our Promise: Innovate Empower Honor Serve

Discover a joyful place filled with opportunities to learn and grow, thanks to Ecumen's person-centered approach to managing care. We offer a wide range of services to help you or a loved one enjoy life with confidence and security.

Demographics

- Wide variety of services provided

Amenities

- Community-wide WiFi access
- Elevators
- Private bedrooms/bathrooms

Services

- Assisted Living
- Memory Care
- Health Care Services
- Daily comfort checks
- 24 hour response services
- 24 on-site staff

Features

- Meal plans with daily snacks
- Light house keeping
- Regularly scheduled social, spiritual and recreational programs

Harmony River
1555 Sherwood St. SE
(320) 484-6000

Harmony River

Harmony River is a place to rejuvenate, to connect and to celebrate the best within you. Located in western Minnesota, Harmony River provides intimate neighborhoods of personal suites for older adults needing skilled care and memory care services.

Demographics

- Variety of services provided

Amenities

- Beauty Salon/Barber Shop
- Public Wi-Fi & Cable TV
- Lounge
- Hearth
- Parlor
- Sun Porch
- Chapel/ Community Room
- Café
- Activity Room
- Personal Laundry
- Courtyard and walking paths
- Private bath
- Flexible Dining Hours
- Three Daily Meals and Snacks served in the family dining room.

Services

- Veteran Contracts
- Hospice Contracts
- 24/7 Admissions
- State-set rates for care
- Medicare
- Medical Assistance
- Various HMO's
- Private Insurance
- Long Term Care Insurance
- Private Funds

Features

- Therapy Room with Physical, Occupational and Speech therapy
- Physician Services
- Access to designated Physician or Nurse Practitioner for on-site services
- Spiritual Care
- Smoke Free Community
- Event and Activity Programming
- DOVE Memory Care
- Liberty Personally Designed Living

Prairie Senior Cottages

1310 Bradford St SE

(320) 587-5508

<http://www.prairieseniorcottages.com/>



Prairie Senior Cottages is an exciting, common sense and attractive alternative to the large Assisted Living or nursing home. Because no two people are alike, we offer the residents of Prairie Senior Cottages community a variety of services and care options that provide solutions.

Demographics

- Variety of services provided

Amenities

- Pet friendly
- Security features
- Lawn care and snow removal
- Maintenance and repair

Services

- Personal needs/individual attention
- Short stay respite rooms
- RN supervision and case management
- 24/7 trained caregivers
- Spiritual services
- Medical escort service
- Oxygen administration
- Nebulizer treatment
- Daily personal hygiene
- Blood sugar checks
- Personal transportation

Features

- Family Style Dining
- Structure & specialized Activities
- Social and recreational programs

Woodstone Senior Living Community

1025 Dale Street SW

(320) 234-8917

<https://woodstoneseniorliving.com/hutchinson/>



We believe in three key principles to be successful in offering the best possible service to the residents that call Woodstone home. Offer choice, maintain dignity and promote individuality. Woodstone puts the focus on the residents that live in our community. When residents come to live with us, they can expect a wonderful atmosphere where they are valued as an individual. Imagine having the opportunity to live as a member of a community where people are dedicated to you! Whatever your idea of independence or enjoyment, we have the services to meet your personal needs, both now and in the future.

Demographics

- Memory care/assisted living

Amenities

- Dining area
- Full service amenities
- Variety of customizable options

Services

- Memory care
- Choice in care plans
- Individual opportunities

Features

- Care suites
- Activities
- Community programs
- Monthly staff training
- Monthly family educational nights

Long Term Care or Skilled Nursing Facilities

Birchwood House

710 Park Island Drive

(320) 587-7737

<http://www.birchwoodmn.com/>

BIRCHWOOD HOUSE
PRAIRIE RIVER HOME CARE

Please contact the establishment for information on demographics, amenities, services and features.

Community Senior Friendly Amenities

Adult Day Care Services:

- Hutchinson Area Health Care Day Services – (320) 234-4630

Employment:

- Minnesota Work Force Center – (320) 587-4740
- PeopleReady – (320) 244-2139

Financial Services:

- Lutheran Social Services – (320) 587-2093 or (320) 235-5411
- Telephone Assistance Plan – 1-800-657-3838
- McLeod Social Services Center – (320) 864-3144

Health Insurance Help Service:

- Forms Assistant – 1-800-601-1812

Home Health Care:

- McLeod County Public Health Services – (320) 864-3185
- Prairie River Home Care Inc. – (320) 587-5162 or 1-800-624-9024

Hospice

- Allina Health Home Care Services, Hutchinson – (320) 234-5031

Information & Referral:

- Heartland Community Action Agency – (320) 587-5244
- Mid-Minnesota Area Agency on Aging – 1-800-450-8608
- National Eldercare Locator Line – 1-800-450-8608
- Senior Agenda for Independent Living (SAIL) – 1-800-223-7292
- Senior Lineage Line – 1-800-333-2433
- McLeod Social Services Center – (320) 864-3144

Medical:

- Hutchinson Health Hospital – (320) 234-5000
- Hutchinson Health Clinic – (320) 234-3290

Recreation:

- Hutchinson Senior Center – (320) 234-5656
- Hutchinson Parks and Recreation / Community Education – (320) 587-2975
- McLeod County Parks –1-800-587-0770

Senior Dining Sites

- Lutheran Social Services – (320) 587-6029

Transportation:

- Trailblazer Transit – (320) 864-1000
- McLeod County Social Services (Income Qualified) – (320) 864-3144
- Taxi Service – (320) 587-7878
- ACC Midwest Transportation – (320) 455-9200
- Espland Service – 1-800-448-7433

Veteran’s Services:

- McLeod County Veteran’s Services Office – 1-800-692-2121

Glossary

Senior Care

Activities of Daily Living (ADL’s) – Everyday tasks associated with personal self-care...bathing, dressing, eating, and ability to get in and out of bed, referred to as “transferring.” Gerontologist’s measure senior’s independence by their ability to perform these tasks.

Community Based Services – Resources for older adults that allow them to remain safely in their homes and communities. These resources promote the independence of older adults and are often less costly than traditional nursing homes. Some examples are Homes plus Adult Foster Care, Assisted Living, Means on Wheels, or Senior Dining, Senior Companion Programs and Home Health Care.

Continuum of Care - A range of medical, nursing treatments and social services in a variety of settings that provides services most appropriate to the level of care required. For example, a hospital may offer services ranging from nursery to a hospice.

Home Health Care - This service may offer a variety of useful services to older people living at home. Home Health aides are trained to assist with personal care hygiene, prescribed exercises, meal preparation, and shopping or light housekeeping, all under the supervision of a licensed nurse.

Hospice Care – Care and comfort measures provided to those with a terminal illness and families. It can include medical, counseling, and social services.

Housing Unit – A generic term that may refer to a bed, a room, or a rental condominium or cooperative apartment. For example, one bed in a double nursing home room is one housing unit, and a two-bedroom market rate apartment is also one housing unit.

Meals on Wheels – Home delivered meals that can provide a nutritious meal to individuals who are unable to prepare meals and are unable to leave their homes.

Respite Care – Temporary relief from duties for caregivers, ranging from several hours to days. May be provided in-home or in a residential care setting such as an assisted living facility or nursing home.

Senior Companion Program - Volunteers that provide companionship and socialization to seniors in their own home on a regular basis.

Independent Living: Multi-Unit Senior Housing Facility

Senior Rental Apartment – Age restricted multi-unit housing with self-contained living units for older adults who are able to care for themselves.

Condominium – Ownership housing in an apartment-style building or townhouse-style complex. Condominium residents hold title to their own living unit and share ownership of the common areas with other owners in the developments. Townhomes are classified in this category.

Cooperative (Co-op) – Ownership housing in a multifamily building or complex. The corporation owns the development on behalf of the occupants, who buy shares in the corporation in exchange for the right to occupy a specific housing unit.

Congregate Senior Housing Community - Multi-unit senior housing facility that includes supportive services such as meals, housekeeping, social activities, and transportation. Congregate living encourages socialization by offering meals in a central dining area and scheduled social programs. Typical amenities and services include laundry and linen service,

dining room, emergency call system, controlled access, and social services. There is usually an age restriction, and individual's pay for rental housing and services on a monthly basis.

Housing with Services – A variety of types of buildings (e.g., market rate rental apartment, subsidized apartment, board and lodging establishment, adult foster care/home/Homes Plus or non-certified boarding care homes) that offer or provide for a fee either two or more supportive services or one or more health related services.

Assisted Living - A service concept, not a place. Assisted living services can be found in a variety of "housing-with-services" settings. Assisted living programs usually include a combination of supportive services and health-related services, but all are different. With this wide variety of choices, consumer can choose the housing-with-services setting that best fits their needs.

Nursing Home – A facility that provides 24 hour nursing care for convalescent residents and those with chronic and/or long-term care illnesses. Regular medical supervision and rehabilitation therapy have to be available, and the facility may specialize in certain types of care such as sub acute, intravenous therapy, and respiratory therapy. Payment for room, board and services is a daily rate.

Payment Source - Private funds, Medicaid, Medicare, Long-Term Care Insurance.

Case Mix – Refers to the method the State of Minnesota uses to set nursing home rates under the Medical Assistance Program. The case mix payment system is set up so that those needing more care pay more than those who need less care. There are 11 different case mix classification levels, each with a corresponding payment rate. The case mix system was established to provide a better way to manage health care costs. Minnesota law requires all residents, regardless of who pays the bills, to be charged the same rate for comparable services. A registered nurse from your county pre-admission screening program, nursing home or the Health Department makes an assessment of the care you are expected to need. The Health Department then reviews this assessment and assigns the appropriate letter classification level and forwards this information to the long-term care facility.